



Woodlands Academy



Early Years Foundation Stage
2017



A Unique Child

Positive Relationships

Enabling Environments

Learning and Development

How we support children

Starting Point

- Build relationship between child and parents/family (e.g. home visits)

Observe

Assess

Plan what next



A Unique Child

Positive Relationships

Enabling Environments

Learning and Development

Curriculum



Phonics

Letters and Sounds



Jolly
Phonics

s	a	t	i	p	n	c	e
h	r	m	d	g	o	u	l
f	b	ai	j	oa	ie	ee	or
z	w	ng	v	oo	y	x	ch
sh	th	qu	ou	oi	ue	er	ar

Golden Rules

At Woodlands Academy we follow these golden rules:

- We listen to people
- We are honest
- We are kind and helpful
- We are gentle
- We look after property
- We work hard

Involving Parents

We welcome parent support and really value your contributions to your child's learning;

★ ★ ★ WOW ★ ★ ★ ★ ★ WOW ★ ★ ★

★ Name: _____ Date: _____ ★

★ Achievement: _____ ★

★ W _____ W

★ O _____ O

★ W _____ W

★ _____ ★

★ Adults Signature: _____ ★

★ ★ ★ WOW ★ ★ ★ ★ ★ WOW ★ ★ ★

Personal, Social and Emotional Development 40-60mths

Please use this WOW card to write about your child's achievements in their personal, social and emotional development. Below are some examples of what to look out for:

Making Relationships

- * Starts conversations, listens and takes account of what others are saying.
- * Is able to resolve conflicts with other children by finding a compromise.

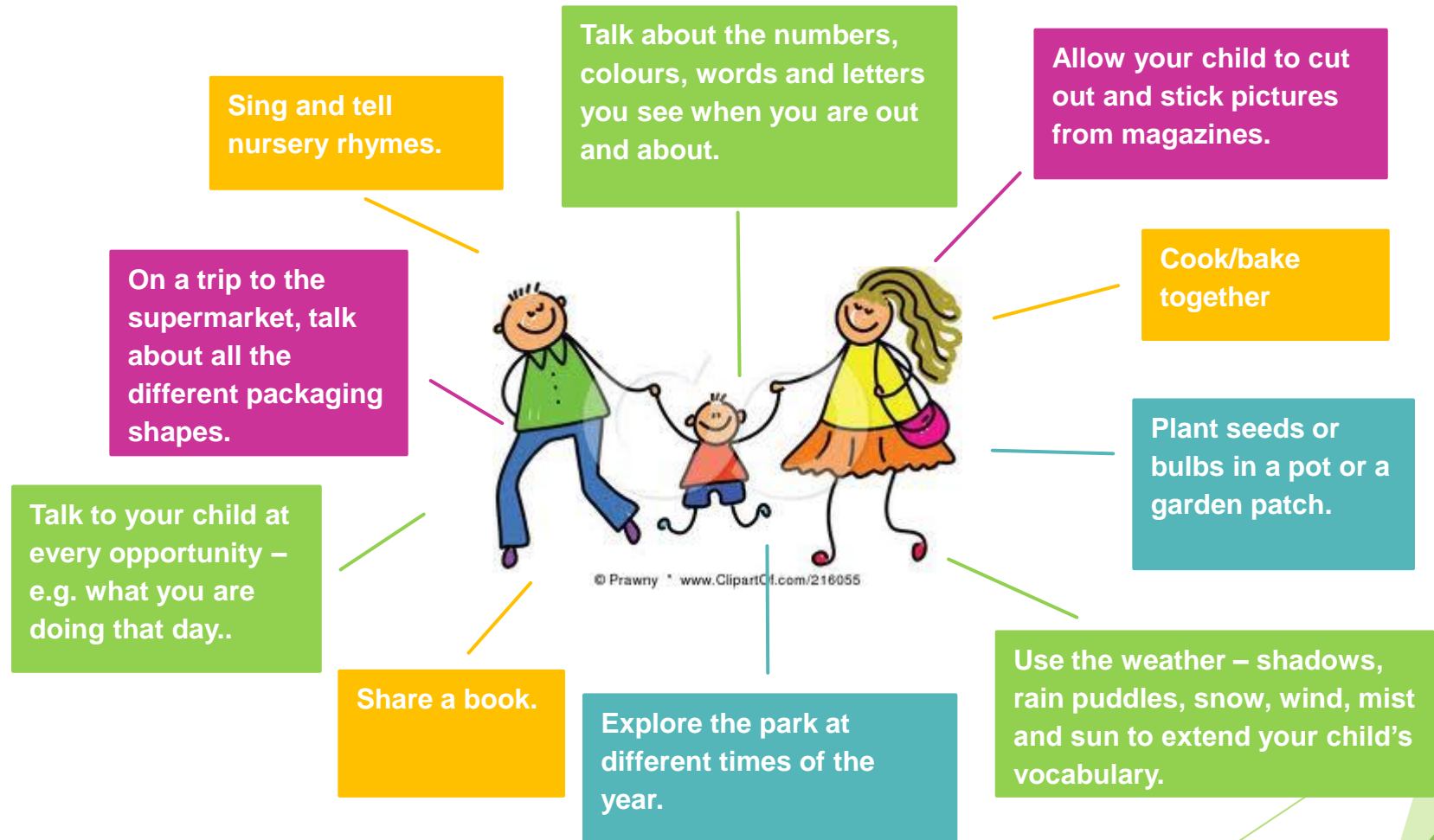
Self-confidence and Self-awareness

- * Is confident to speak to others about their own needs, wants and interests.
- * Children are able to describe themselves in a positive way and talk about their abilities.

Managing Feelings and Behaviour

- * Is aware of set boundaries and of behavioural expectations.
- * Is aware that their actions affect other people e.g. they comfort a child when they have upset them.

How parents can help with children's learning



Home Learning

- Bug Club
- Mathletics
- DB Primary

Reading

PE Kit

Water

Lunch

Cooking money

Mobile phones on school premises

Attendance

A priority for the school is attendance. Children who are at school and on time everyday will be rewarded on a Friday. Please help your children with their learning by getting them to school on time every day.



The background features abstract, overlapping green geometric shapes, primarily triangles and polygons, in various shades of green, creating a modern and dynamic visual effect.

Thankyou for attending

Questions or comments